

MC4

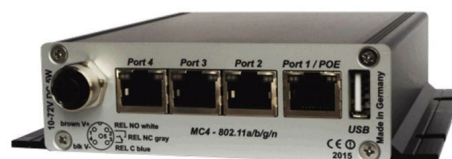
802.11a/b/g/n WLAN Ethernet Adapter

Description:

The MC4 provides network connections between devices equipped with Ethernet ports or serial interfaces and wireless LAN networks. The typical usage area for the MC4 is the broad field of industrial WLAN applications in machine-to-machine communication. This includes mobile installations such as forklifts or AGV's.



MC4-SL



MC4-SL-M12



MC4-SC

Properties:

Hardware:

Processor board with ARM® Cortex®-A9 Core
 Memory: 128MByte DDR-RAM and 4GB Flash
 802.11a/b/g/n for 2.4 + 5 GHz WLAN, Data rate up to 300 MBit/s
 4 x Gigabit LAN interface
 USB2 Port also for interface extension
 1 x relay switch
 1 x aux input
 Power supply 10-72V or 802.3af PoE via LAN Port 1
 Robust aluminum housing with various mounting options
 Wide mechanical and functional compatibility to the earlier **modas** WLAN client adapter WLX + ESCG.

Functions:

Configuration via the website or by using the MC-Config program.
 Different bridge modes to connect the LAN clients.
 - NAT
 - Single Client NAT
 - Single Client Cloning
 - Level 2 Bridge
 - MWLC Mode (transparent tunnel mode)
 Certificate management for authentication via 802.1x
 SCEP (Simple Certificate Enrollment Protocol)
 Fast-Roaming 802.11r
 Serial-Client via TCP or UDP

Device Options:

Mounting:

- 1) side mounting brackets (MC4-SL...)
- 2) DIN rail mounting clip (MC4-SC...)

Power supply connection:

- 1) 5 pol. M12 connector (incl Relay) (MC4-Sx-M12)
- 2) 8pol terminal block (Weidmüller) (incl. Relay + Aux. input) (MC4-Sx-WK8)
- 3) 3pol M8 connector (Power supply) (MC4-Sx-M8)

Antenna connector:

- 1) 2 x RP-SMA (standard)
- 2) 1 or 2 TNC or RPTNC

Serial Interface:

- 1) 1 x RS232 (Standard)
- 2) 1 x RS485 (RS422)

Technical data:

Specification:	
Ethernet	4 x 10/100/1000 MBit Auto MDI/MDIX
Serial	no serial interface (possible with USB to serial adapter)
USB	1 x USB 2.0 to connect printers or USB adapter with various other interfaces
Relay	1 x change-over switch max 1A@24V, max 125VAC
AUX-Input	1 x galv. isolated 10 – 72V
Antenna connectors	2 x RPSMA (optional TNC or RPTNC)
Power supply	10 – 72VDC or 802.3af PoE via the LAN Port
Energy consumption	<= 5W (3W typical)
Operating temperature range	0-60°
Dimensions	105x125x35mm
Weight	ca. 400g

WLAN-Interface:		
Technologies	802.11 a/b/g/n WLAN (2.4 + 5 GHz Band)	
Antennas:	2 Antennas (2T2R MIMO)	
Encoding	WEP (64,128bit) + TKIP/AES	
Security	802.11i WPA(2) – PSK 802.1x EAP-PEAP, -TLS, -TTLS, -LEAP	
Channels	802.11b/g/n ETSI 1-13, USA/Canada 1-11 802.11a/n ETSI 19, USA/Canada 25 (U-NII-1 + UNII-2A + U-NII-2C+U-NII-3)	
Data rates	Mode	Data rate
	802.11b:	1, 2, 5.5, 11Mbps
	802.11g / a	6, 9, 12, 18, 24, 36, 48, 54Mbps
	802.11n (20MHz)	1Nss: max. 72.2Mbps 2Nss: max. 144.4Mbps
	802.11n (40MHz)	1Nss: max. 150Mbps 2Nss: max. 300Mbps
Transmit power	802.11b/g 17 dBm	802.11a 15 dBm
	802.11gn 16 dBm	802.11an 15 dBm

Order codes:

	Option	Order code
Housing		
	Housing with mounting brackets	MC4-SL....
	Housing with DIN-rail-clip	MC4-SC....
Power supply connection		
	M12 connector	MC4-Sx-M12
	8pol. Weidmüller terminal block	MC4-Sx-WK8
	M8 connector	MC4-Sx-M8
IO-Option		
	Relay (included in M12 + WK8)	
	Aux-Input (included in WK8)	MC4-Sx-M12-INP
Antenna Options	Standard: 2 x RPSMA	
	1 or 2 TNC Antenna connector(s)	MC4-Sx-xx-1(2)TNC
	1 or 2 RPTNC Antenna connector(s)	MC4-Sx-xx-1(2)RTNC